

Datasheet

Screwing simulator

VS-DRT2

Setting ranges 20Nm - 100Nm | 200Nm - 300Nm

for setting and checking the cut-off torque of electric
and pneumatic screwdrivers



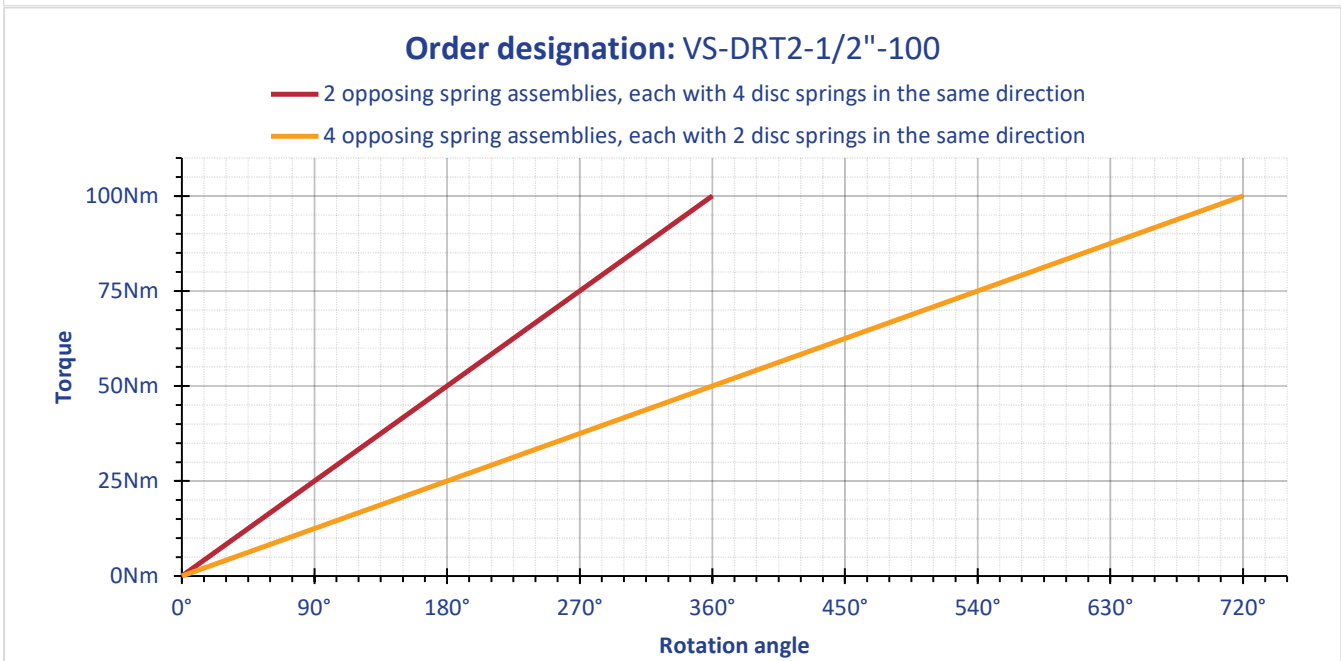
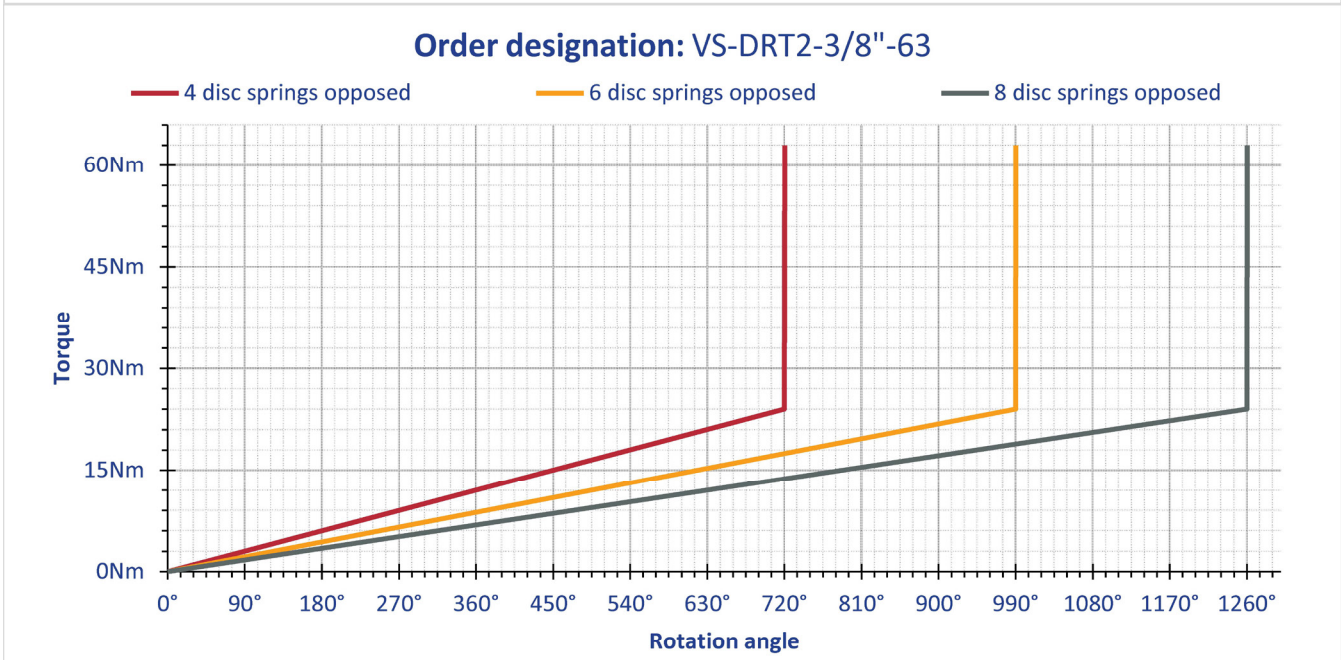
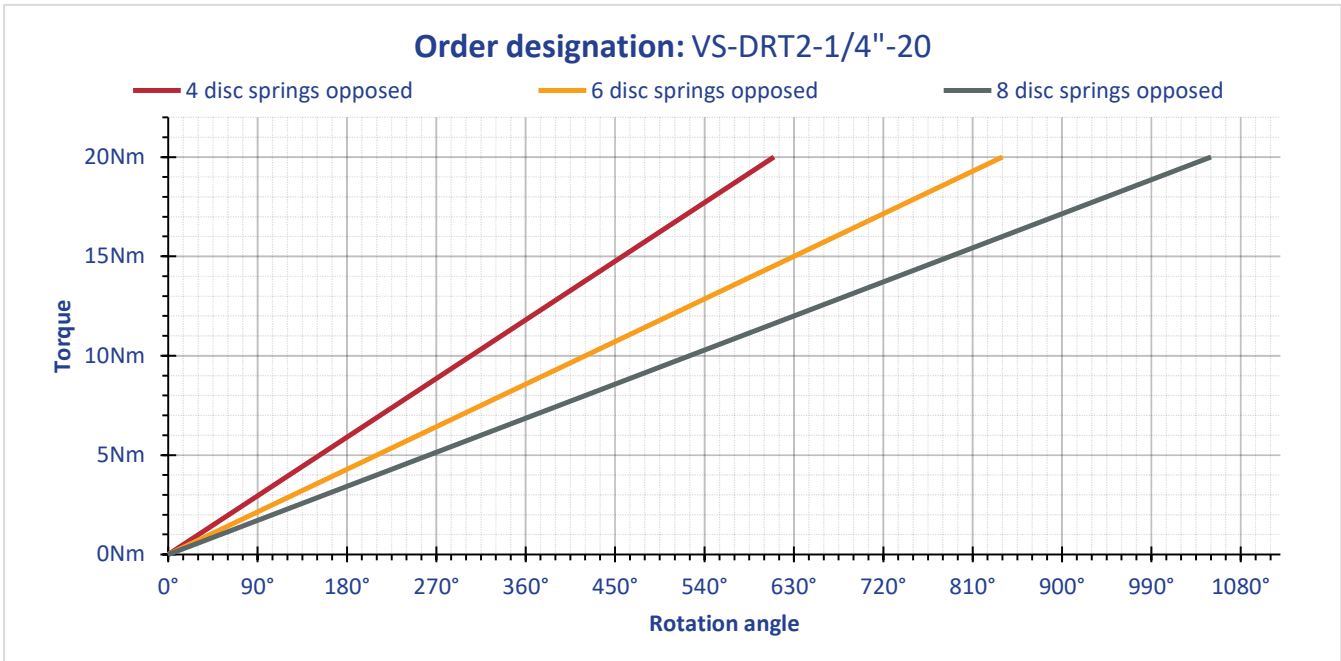
Example of application:



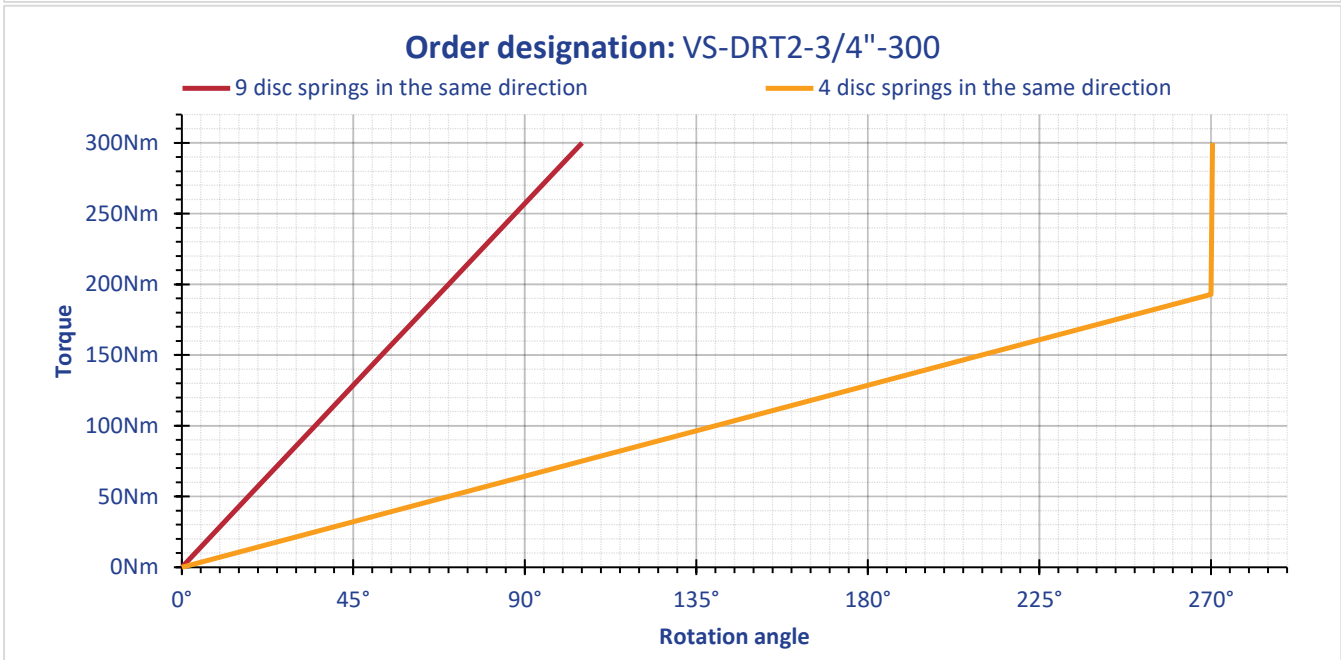
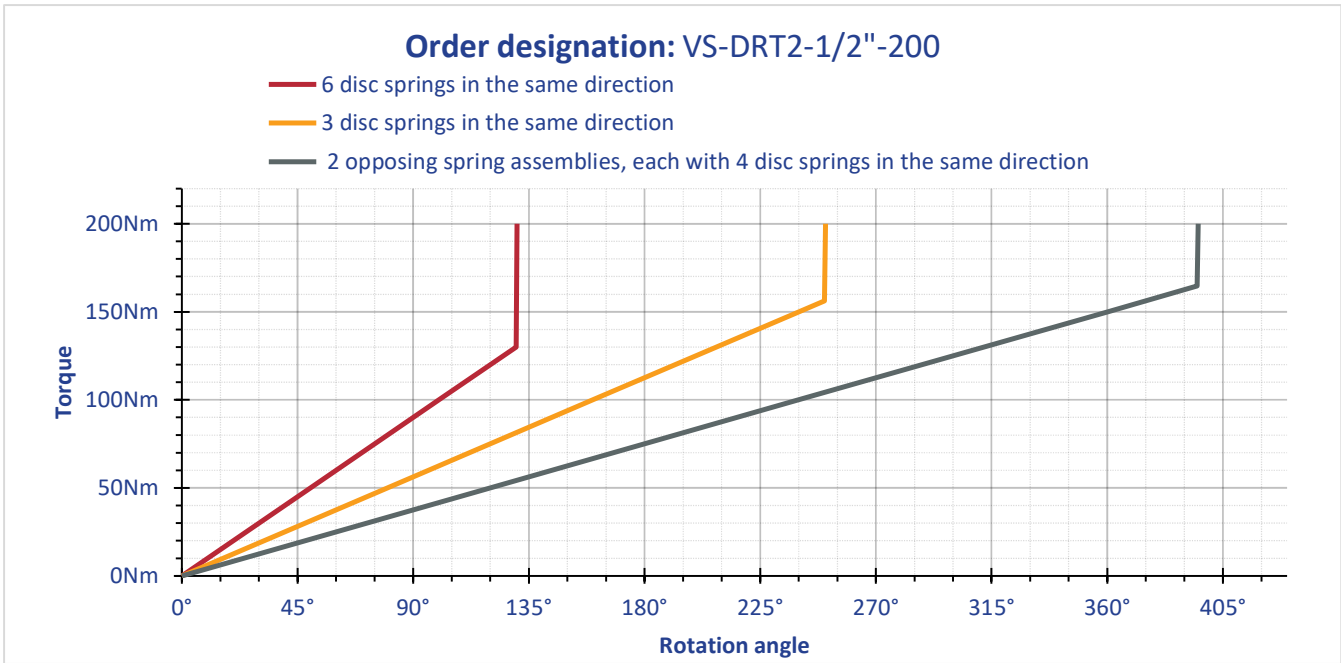
The screwing simulator is particularly suitable for checking the repeatability of impulse and electric screwdrivers after a repair or for checking the setting range.

By arranging the integrated disc springs differently, the angle of rotation, which depends on the torque, can be changed.

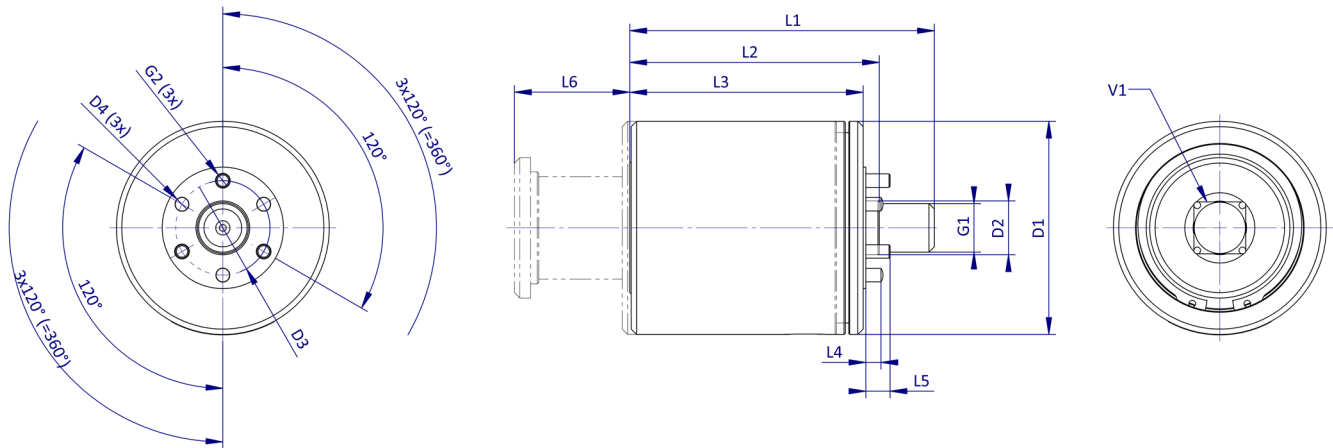
Torque-rotation angle diagram VS-DRT2 for 20Nm - 100Nm



Torque-rotation angle diagram VS-DRT2 for 200Nm - 300Nm



Mechanical dimensions VS-DRT2



Measuring range: (0 - ...) [Nm]	20	63	100	200	300
V1 Square socket (DIN 3121)	1/4"	3/8"	1/2"	1/2"	3/4"
Dimensions: [mm]	(General tolerances DIN 2768-m)				
L1		100		113	
L2	76...82	76...82	76...79	91...93	91...92
L3	70...76	70...76	70...73	85...87	85...86
L4		9		6	
L5		10		9	
L6 max.		40		40	
D1		59		79	
D2 - 0,05		19,95		19,95	
D3 ± 0,1		35		35	
D4 g6 (Straight pin DIN 6325)		5		5	
G1		M14		M18x2	
G2 (Cap screw DIN 912 - 8.8)		M5		M5	